
ICP2-COMBO

Production Quality In-Circuit 12-Channel Gang Programmer

Quick Start

IMPORTANT NOTE:

- Since 2019, Softlog Systems has manufactured the ICP2-COMBO(**G3**) programmer instead of the legacy ICP2-COMBO
- Due to their near-full compatibility, both programmers are referred to below as ICP2-COMBO. Where a distinction is necessary, they are referred to as the “**G3** product” and the “**non-G3** product”

1 Contents of the Base Package

- ICP2-COMBO programmer unit.
Note: this document describes 12-channel programmer (8-channel and 4-channel programmers are also available)
- Power adapter 100-240VAC/12VDC 60W
- USB cable
- RS-232 cable
- LAN cable (straight)
- DIN 41612 mating connectors: 48-pin and 64-pin

2 Host Computer Requirements

- PC Windows-7/8/10/11
- Free RS-232, USB or LAN port

3 Installation

3.1 Preliminary Installation

3.1.1 Software Installation

- Visit our site and get the latest software: www.softlog.com/downloads
NOTE: skip this step if you got newer version from Softlog Systems
- Download and install “ICP Family GUI Software” (ICP for Windows), default destination directory: C:\Softlog\IcpWin

3.1.2 Preliminary Hardware Installation

IMPORTANT: do not connect ICP2-COMBO unit to USB port until the USB driver is installed

- Install USB driver according to Help - USB Driver Installation (CP210x) instruction.
NOTE: USB driver installation is not required for operation with RS-232 port
- Connect the ICP2-COMBO to its power supply

ICP2-COMBO Quick Start

- Connect RS-232 or USB cable between PC and the programmer
- NOTE: read Help - User's Manual for LAN operation

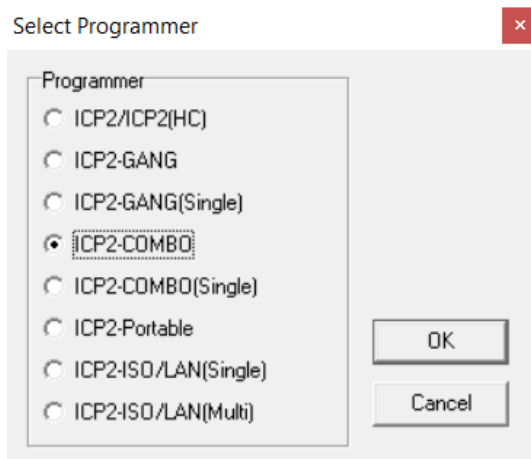
3.2 Initial Software Setup

3.2.1 Run "ICP_Win.exe"

- Double-click "ICP for Windows" icon
- Disregard error messages "Can't open port", "Communication error", etc.
- Press "**No**" if message "Newer firmware is available. Upgrade now?" appears

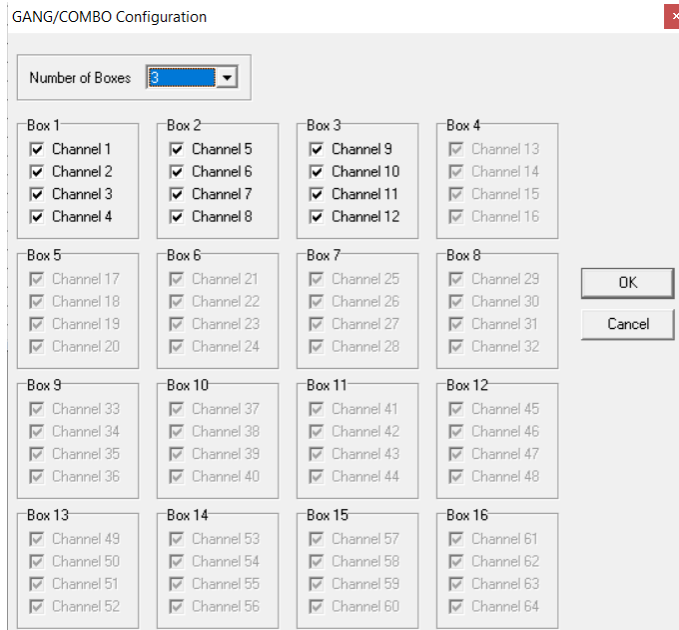
3.2.2 Select Programmer

- Open "Programmer → Select Programmer" and select ICP2-COMBO



- Press OK
- Select "Number of Boxes" as follows:
 - ICP2-COMBO (12 channels): 3 boxes
 - ICP2-COMBO (8 channels): 2 boxes
 - ICP2-COMBO (4 channels): 1 box

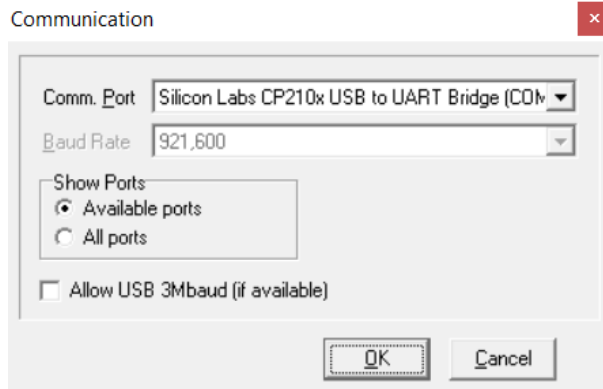
ICP2-COMBO Quick Start



- Press OK

3.2.3 Select COM Port and Upgrade Firmware

- Open “Communication → RS-232/USB/LAN COM” and select COM port your programmer is attached to.
NOTE: the USB virtual COM appears as “Silicon Labs CP210x USB to UART Bridge”



- Press OK
- Press “Yes” if message “Newer firmware is available. Upgrade now?” appears
- Wait until the operation is done
- NOTE: firmware upgrade is not prompted if the latest firmware is detected

3.2.4 Save Configuration

- Select “File → Save Configuration”
- Press Alt-F4 to exit the software
- Your programming system is ready for use

ICP2-COMBO Quick Start

4 Getting Started

This section presents an example to help you become familiar with the ICP2-COMBO programmer and some commonly used functions

4.1 *Preparing Environment and Transferring Environment to Programmer*

Open “Environment → Environment Wizard...” and follow the Wizard

4.1.1 Select Programmer and press “Next >”

4.1.2 Select Boxes/Channels and press “Next >”

4.1.3 Select Environment and press “Next >”

4.1.4 Select Device

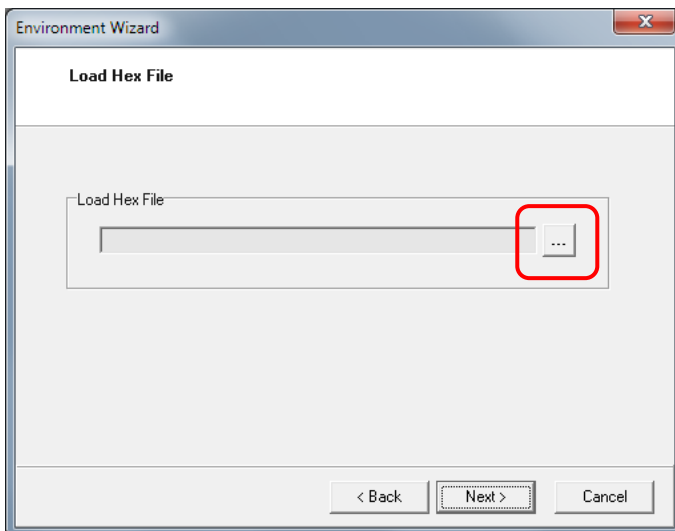
- From the "Device" list select a device to be programmed and press “Next >”

4.1.5 Set Voltages (if required) and press “Next >”

4.1.6 Set Preferences (if required) and press “Next >”

4.1.7 Load (open/import) a HEX/BIN file

- Press on “...” button



- Browse to select a HEX or BIN file
- Press “Open File”
- Press “Next >”

4.1.8 Save Environment

- Press on “...” button
- Type in an environment name
- Press “Save”
- Press “Next >”

ICP2-COMBO Quick Start

4.1.9 Transfer Environment to Programmer

- Press on “Transfer Environment...” button, select your environment and press “Open”
- Wait until environment is transferred to all channels
- Press “Next >”

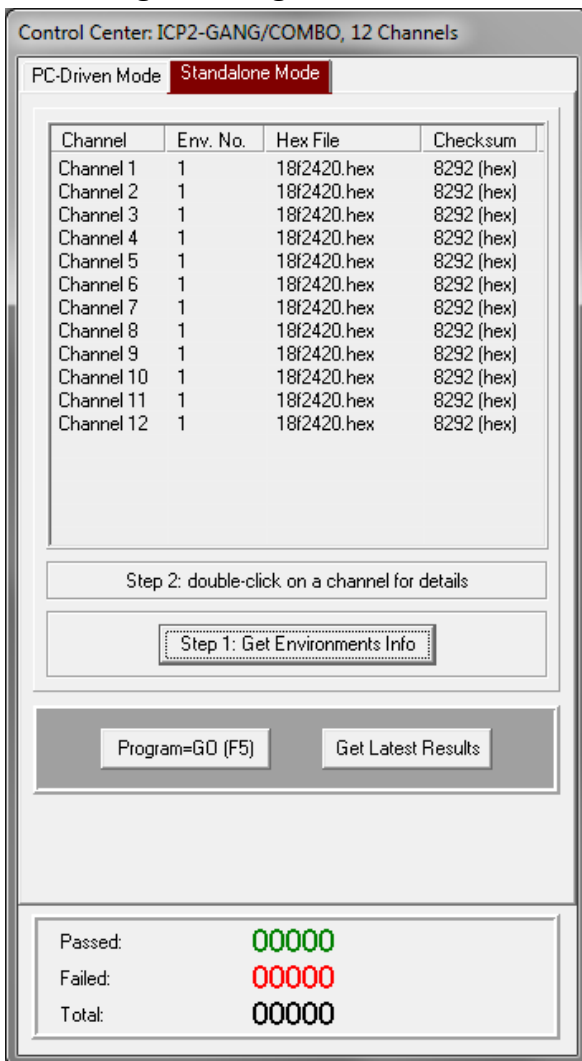
4.1.10 Switch to Standalone Mode (if not already switched)

- Press on “Standalone Mode” button
- Press “Finish”
- Your system is ready for programming

4.2 Review Environment inside Programmer

- Double-click on Channel 1 and go through all items

4.3 Programming Devices



- Save configuration: “File → Save Configuration”
- Connect devices (MCUs) to be programmed
- Press F5

5 Warranty

Softlog Systems (2006) Ltd. warrants this product against defects in materials and workmanship for a period of 1 (one) year. This warranty will not cover programmers that, in the opinion of Softlog Systems, have been damaged due to abuse, improper use, disassembly, replacement of parts or attempted repair by anyone other than an authorized Softlog Systems service technician.

This product must be returned to the supplier for warranty service within the stated period. The buyer shall pay all shipping costs and other charges or assessments for the product by the supplier.

Softlog Systems shall not be liable for any indirect, incidental, or consequential damages, regardless of whether liability is based upon breach of warranty, negligence, strict liability in tort, or any other theory, Softlog Systems will never be liable in an amount greater than the purchase price of the products described by this express warranty. No agent, distributor, salesperson, or wholesale or retail dealer has the authority to bind Softlog Systems to any other affirmation, representation, or warranty concerning these goods.

6 Contact

Softlog Systems (2006) Ltd.

6 Hayotzrim St. Or-Yehuda 6021820 Israel

Phone: 972-3-9515359

Fax: 972-3-9527520

Web: www.softlog.com

E-mail: sales@softlog.com, support@softlog.com

7 Copyright Notice

Windows is a registered trademark of Microsoft Corporation. Microchip, MPLAB, PIC and dsPIC are registered trademarks of Microchip Technology Incorporated.